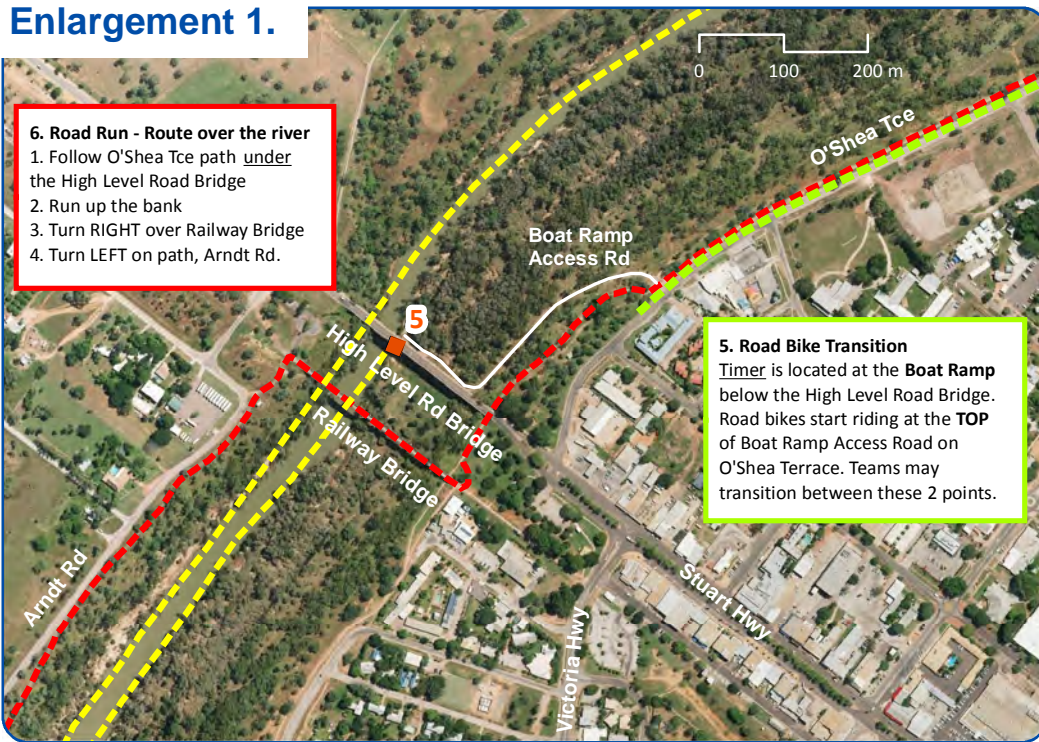


## Enlargement 1.



**Katherine UltraChallenge**  
100km in a day

## COURSE LOCATION MAP 2017

Katherine Multi-Sport Club [www.kmsc.com.au](http://www.kmsc.com.au)

Race Coordinator Neil MacDonald 0401 115 885

### Pre-race

Time

Place

Get there

### Race Start

Time

Place

Get there

### Race Finish

Place

Get there

Presentations

Meals

**Saturday, 5<sup>th</sup> August, 2017**

5:30 pm pre-race briefing: attendance is compulsory

Rotunda, Katherine Museum

3 km north of Katherine Post Office on Gorge Road, opposite the Hospital

**Sunday, 6<sup>th</sup> August, 2017**

6:10 am boat departs for Swimmers and Cross-Country Runners

Katherine Gorge Boat Cruise, Nitmiluk (Katherine Gorge) National Park

30 km north of Katherine Post Office on Gorge Road

**Sunday, 6<sup>th</sup> August, 2017**

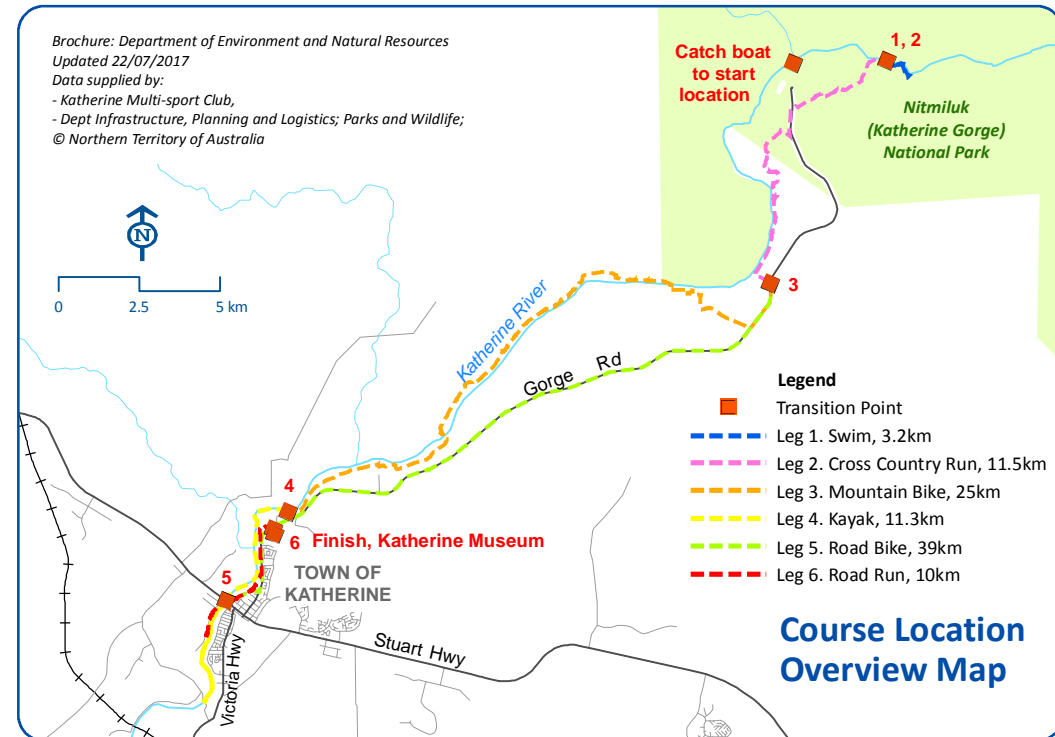
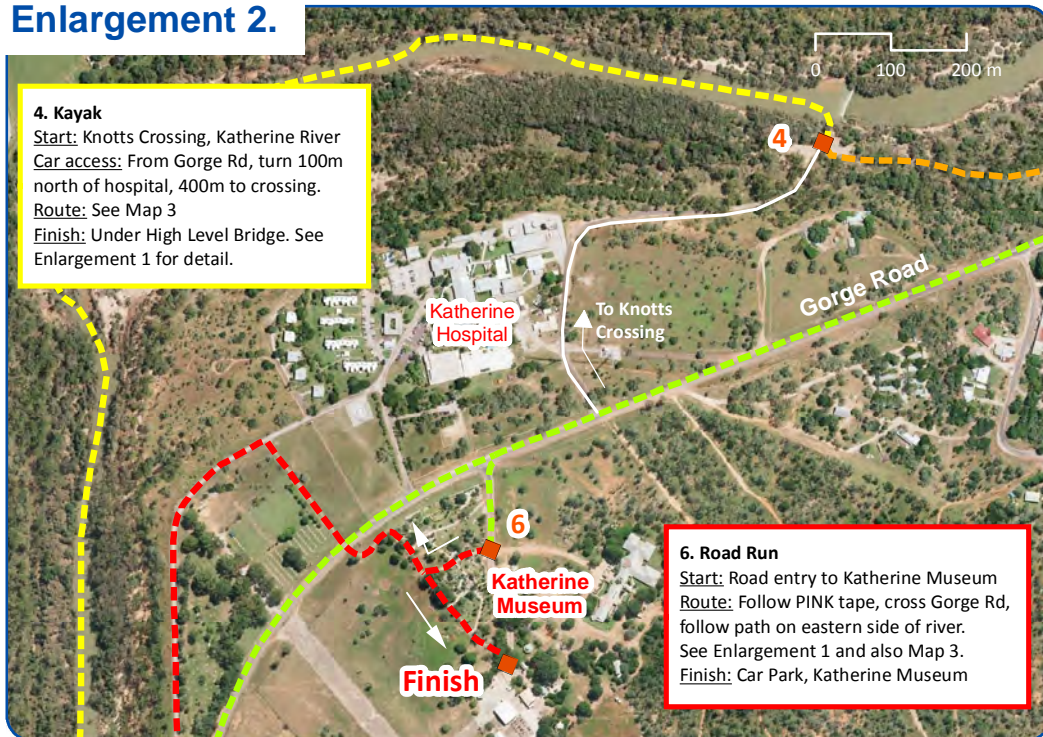
Car Park, Katherine Museum

3 km north of Katherine Post Office on Gorge Road, opposite the Hospital

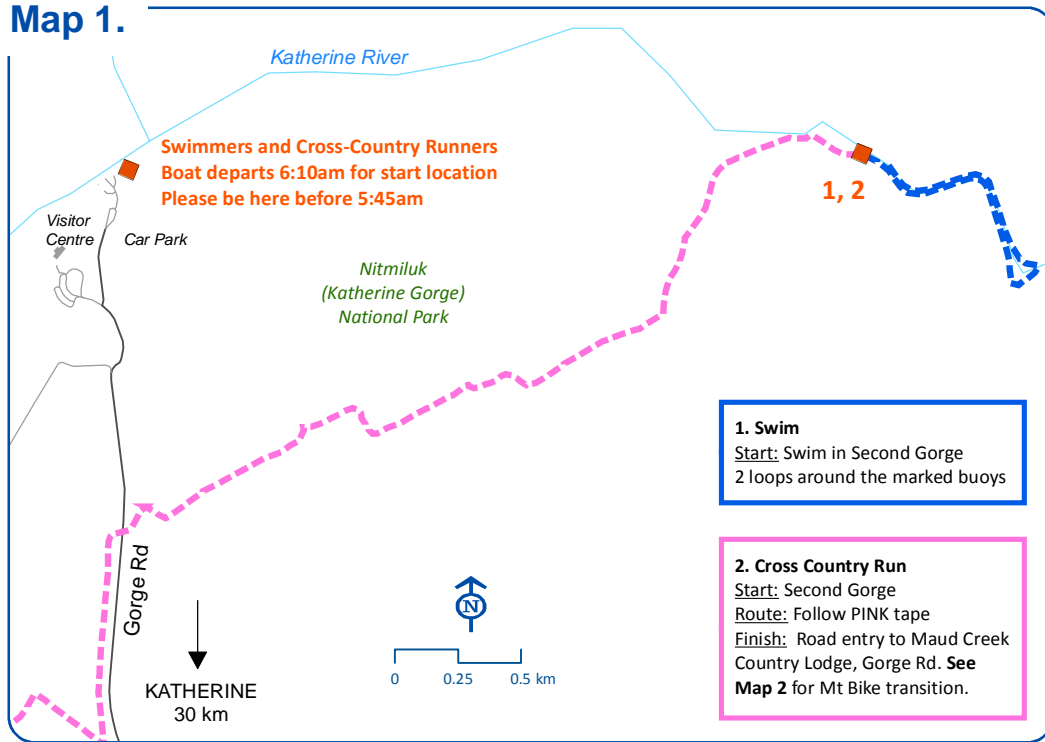
6:00 pm Rotunda, Katherine Museum

\$25/pp meal ticket available when you register

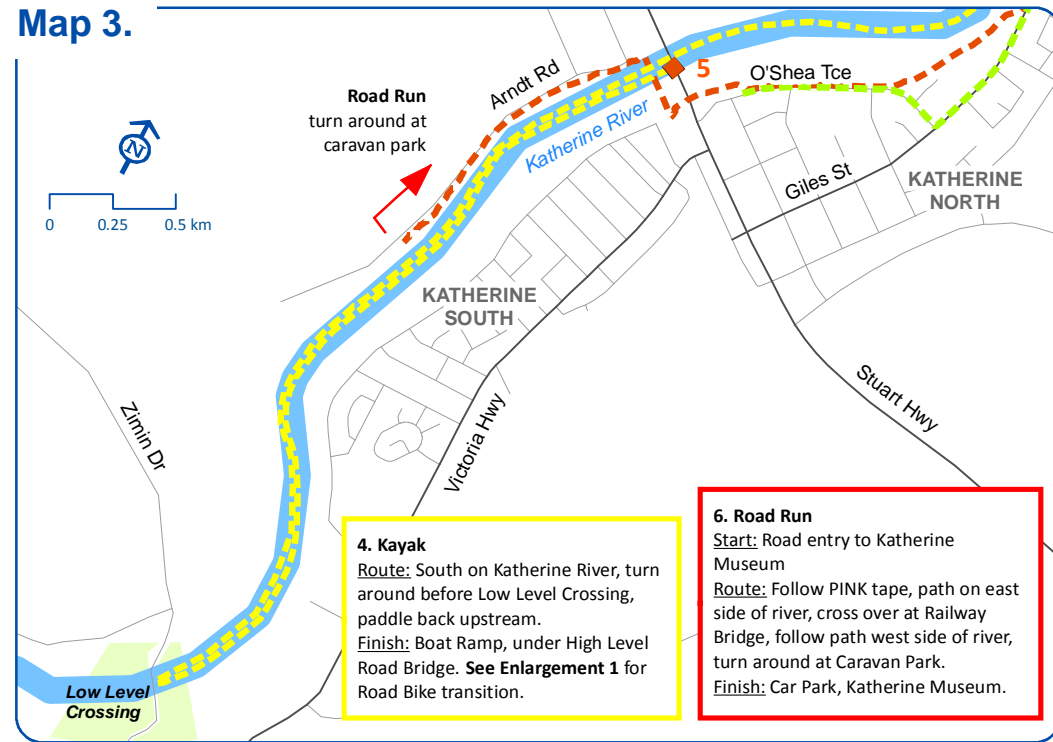
## Enlargement 2.



**Map 1.**



**Map 3.**



**Map 2.**

